

NET Engineering

Company presentation



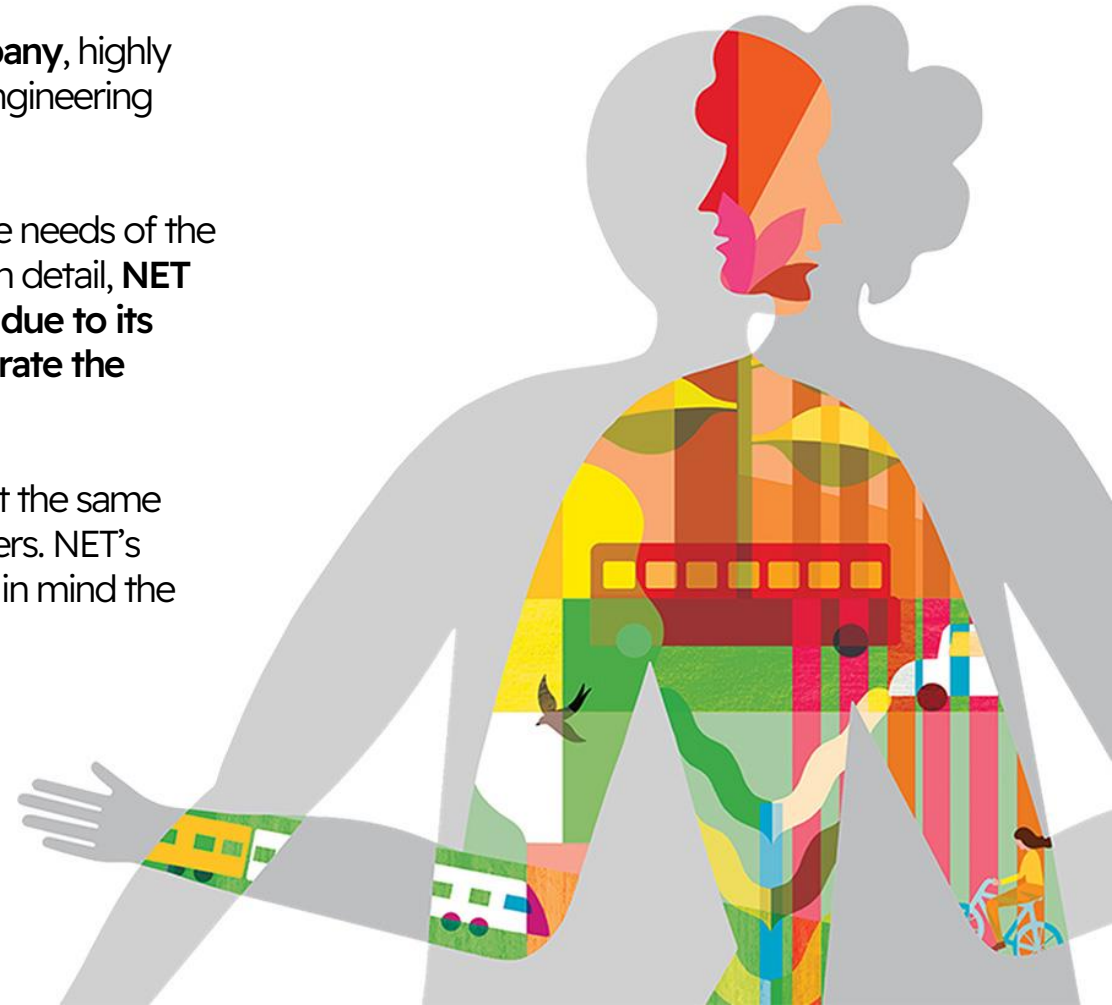
Imagine
Think
Design

Company Profile

NET Engineering is an **independent Italian engineering and architecture company**, highly specialised in the design of transport infrastructure, urban redevelopment and engineering design serving the industrial sector.

As a result of 50 years of experience, NET interprets the context, pre-empting the needs of the market and clients, working with them and indicating the best design solutions. In detail, **NET stands out in the Italian panorama for its ability to manage complex projects due to its high-level specialist skills, the ability to present them in discussions and integrate the contributions.**

NET applies a creative, innovative approach aimed at finding futuristic answers, at the same time ensuring quality of project design and display to the benefit of all stakeholders. NET's mission is System Engineering and responsible planning and design which bears in mind the whole life-cycle of the works.



**our
manifest**



Purpose

We leave future generations a better territory than the one we have inherited.



Identity

We are engineering artists, because we want each project to be a work of art. We are greatly knowledgeable of the different skillsets needed to analyse all of our projects as a whole: from defining the problems to be solved to implementing each project task, without losing sight of our overarching vision that allows us to make each project unique and effective.

We describe our projects with great care, picking a communication style that enhances the unique project features and that effectively addresses each stakeholder. We describe our projects with great care, picking a communication style that enhances the unique project features and that effectively addresses each stakeholder.



Vision

We want to be among the first independent Italian engineering and architecture companies with the ability to read our ever-changing world in order to create excellent projects together with our client.



Mission

We design mobility, urban renewal and industry solutions pioneering impeccable engineering practices in the spirit of excellence. We protect what the future generations will inherit by designing smart, shared, sustainable infrastructure.



Facts and figures

staff

141

FTE
06.2023

150

FTE
Forecast
2023

turnover

13.3

M€
06.2023

> 20

M€
Forecast
2023

location

4

OFFICES
Italy

certification

6

UNI EN ISO
9001
14001
45001
UNI 11337
UNI ISO 30415
UNI/PdR 125



Core competencies:
coordination and communication

Tendering

Complex projects

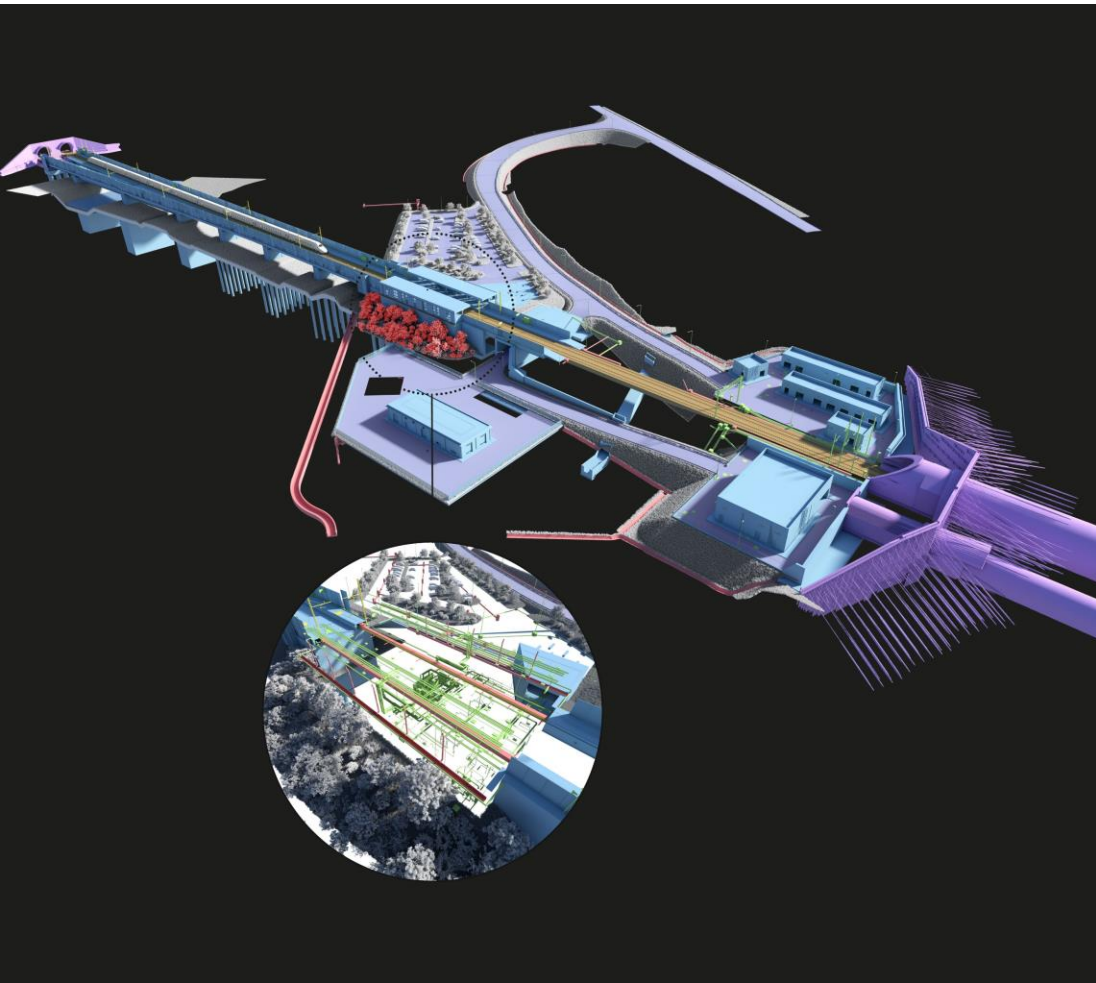
BIM

Visual Design



Core competencies:

coordination and communication



Tendering

360° experience in the world of transport infrastructure

Accurate analysis and interpretation of the basic tender project

Understanding of business needs

Integration among different disciplines

Working under pressure and being able to identify quickly the best possible solutions



Core competencies:

coordination and communication



Complex projects

Work organisation: identification of working methods, division of tasks, setting priorities and deadlines

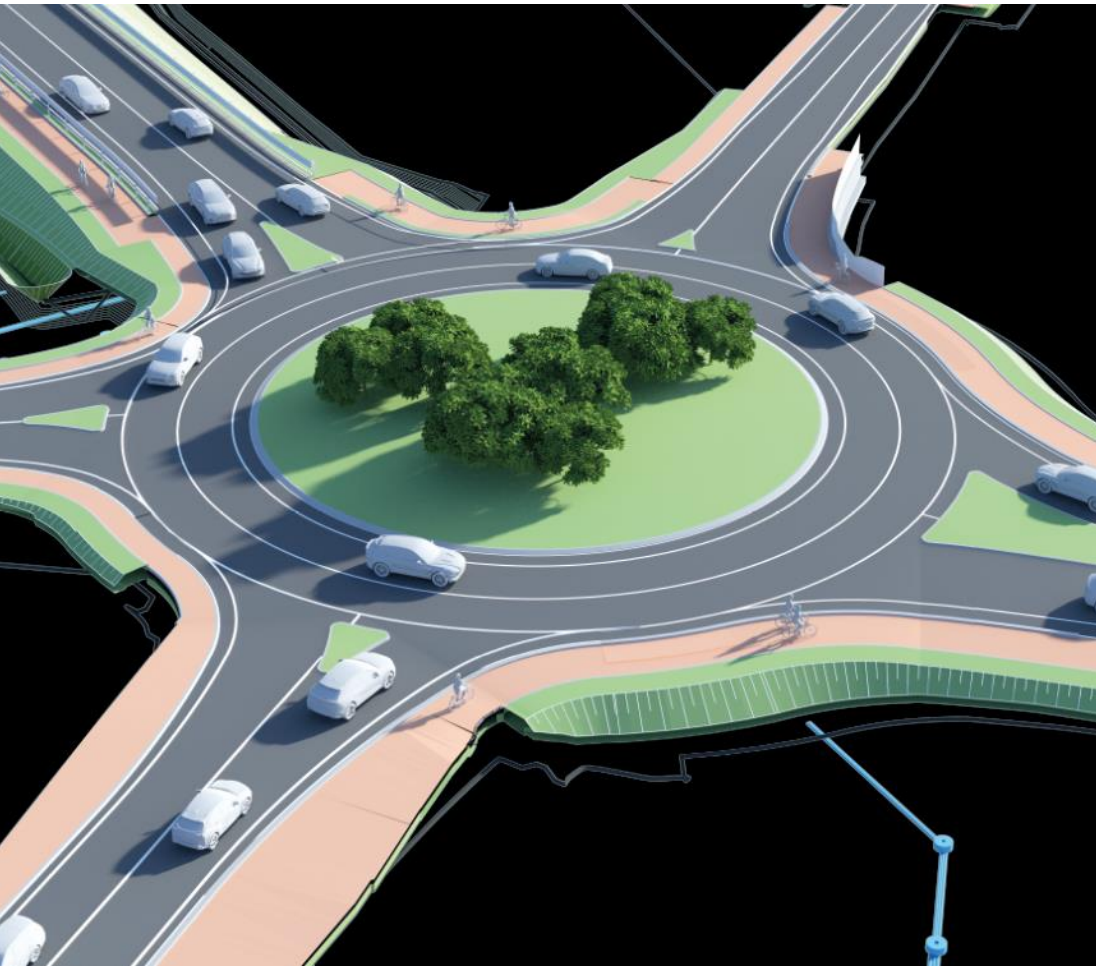
Direct interface with the client, collection and interpretation of requirements

Keeping track of project progress



Core competencies:

coordination and communication



BIM

Creation and organisation of the shared working environment

Definition of technical documentation (OGI, PGI, BEP, etc.) necessary for the development of a BIM project

Implementation of the digital model from the tender phase to the work realisation

Core competencies:

coordination and communication



Visual design

Accurate interpretation of project material, rapid and high-quality processing of visual design product

Communication skills that are clear and effective towards different stakeholders



Services

Dismantling and reconversion

- Mobility planning: urban renewal, intermodal hubs and transport terminals
- Technical and environmental due diligence
- Identification and assistance to the survey plans
- Design the dismantling / reconversion of buildings and industrial sites

Operation and maintenance

- Environmental impacts consultancies
- Yards' impact assessment on traffic and railway operation
- Works of art assessment: seismic, static and safety assessment
- Planning of consolidation interventions and structural rehabilitation
- Optimization studies for the railway operation and TPL (Local Public Transport)

Construction

- Construction supervision and safety coordination
- Technical supervision of construction works
- Construction site planning
- Timetable and work progress monitoring
- Specialist advice for construction site
- Project communication

Programming

- Project review
- Program management
- Market analysis on transport demand
- Support for tenders drafting
- Clients assistance for defining the interventions priority

Planning

- Analysis of alternatives and cost-benefit analysis
- Support for the definition of exercise models
- Coordination and specialised support to companies during tendering
- Urban, regional, wider areas mobility plans
- Planning and scheduling of TPL services
- Support for the selection and characterization of sites for industrial settlements and for energy production
- Risk analysis for industrial sites
- Soil safeguard and protection and natural disaster reduction studies
- Consultancy for the management of natural resources
- BIM Management

Design

- Support during permitting processes
- Technical-specialistic support for stakeholder engagement
- Identification and assistance to the survey plans
- Execution and returning of traditional and 3D surveys
- Technical-economic, final /detailed and construction feasibility design
- Environmental, hydraulic, geological, geotechnical, plant engineering and structural specialistic studies
- Project management



Business areas



**Transport
infrastructure**

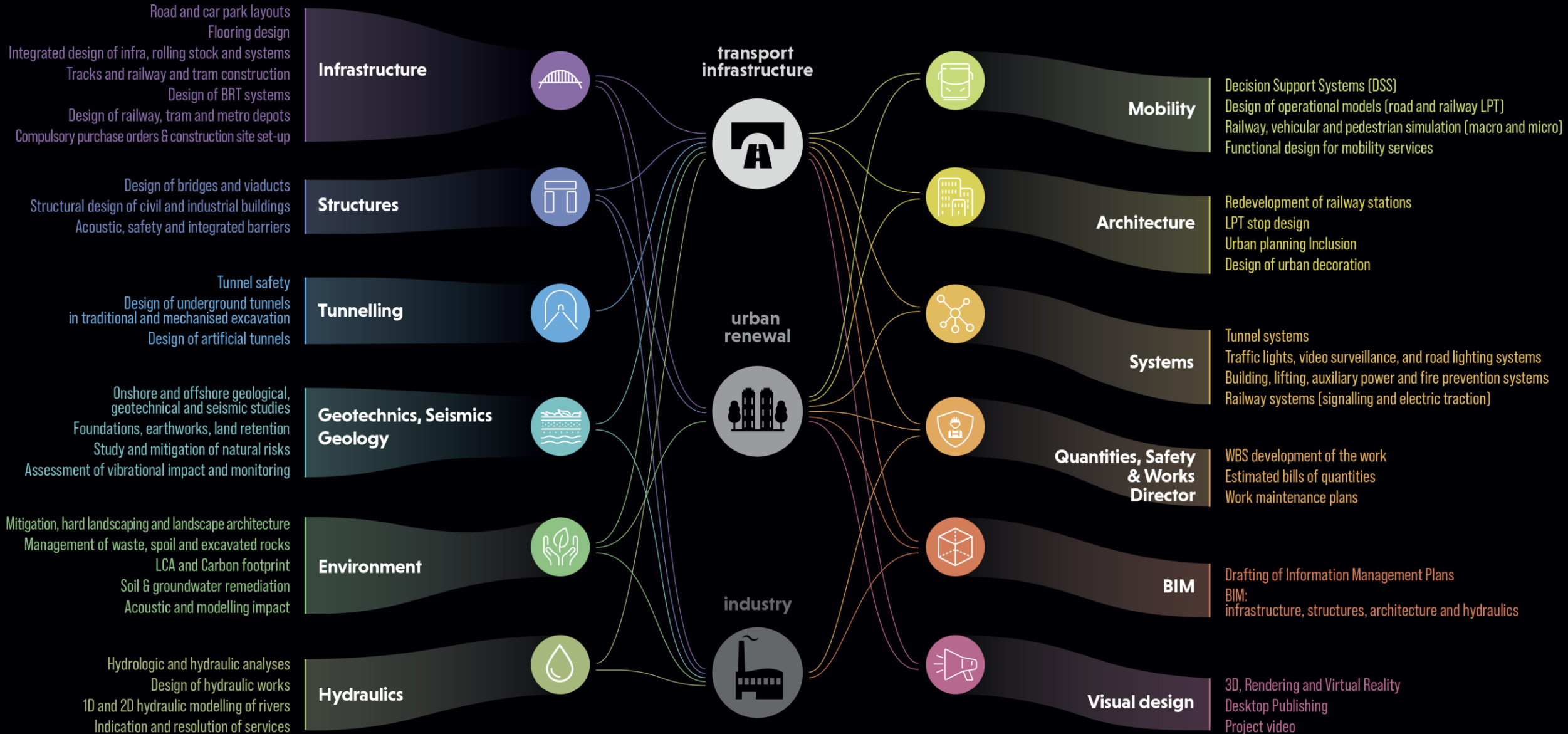


**Urban
renewal**



Industry

Disciplines and technical competences





Transport Infrastructure | Railways



what

High Speed Lines
Conventional Lines
Stations and depots

main clients

European Investment Bank
Regional and concession railways
Ukrainian Railways
Italian consortium for high-speed lines construction
National Railway Infrastructure Company (Bulgaria)
Railway operators
African Development Bank



Railways | Main projects





Railways

Main projects

Reconfiguration of the cargo terminal Calata Bettolo (Port of Genoa)

Client: SECH

What: Detailed design in the railway sector for the new location of tracks, of transtainer cranes, of systems for moving locomotives and unloading rail tankers. Design of systems, lighting and underground services, environmental study, safety and signaling plan.





Railways

Main projects

Restructuring of the mechanical railway workshop in Segrate-Pioltello (Milan)

Client: Mercitalia maintenance (FS Group)

What: Preliminary, detailed and construction design for the rehabilitation of a 21,550 m² building and 68,000 m² of external areas (existing railway yard and yard). The project - developed in B.I.M. - includes the upgrading of the production layout of the workshop and the addition of services.





Railways

Main projects

Rehabilitation of the railway depot of the “Val Venosta – Malles” line (Bozen)

Client: South Tyrol Transport Structures Company

What: Preliminary, detailed, construction design and works supervision for the enlargement of the existing shed to allow the storage of new rolling stock and the execution of routine maintenance operations.

Construction costs: 3 M euro





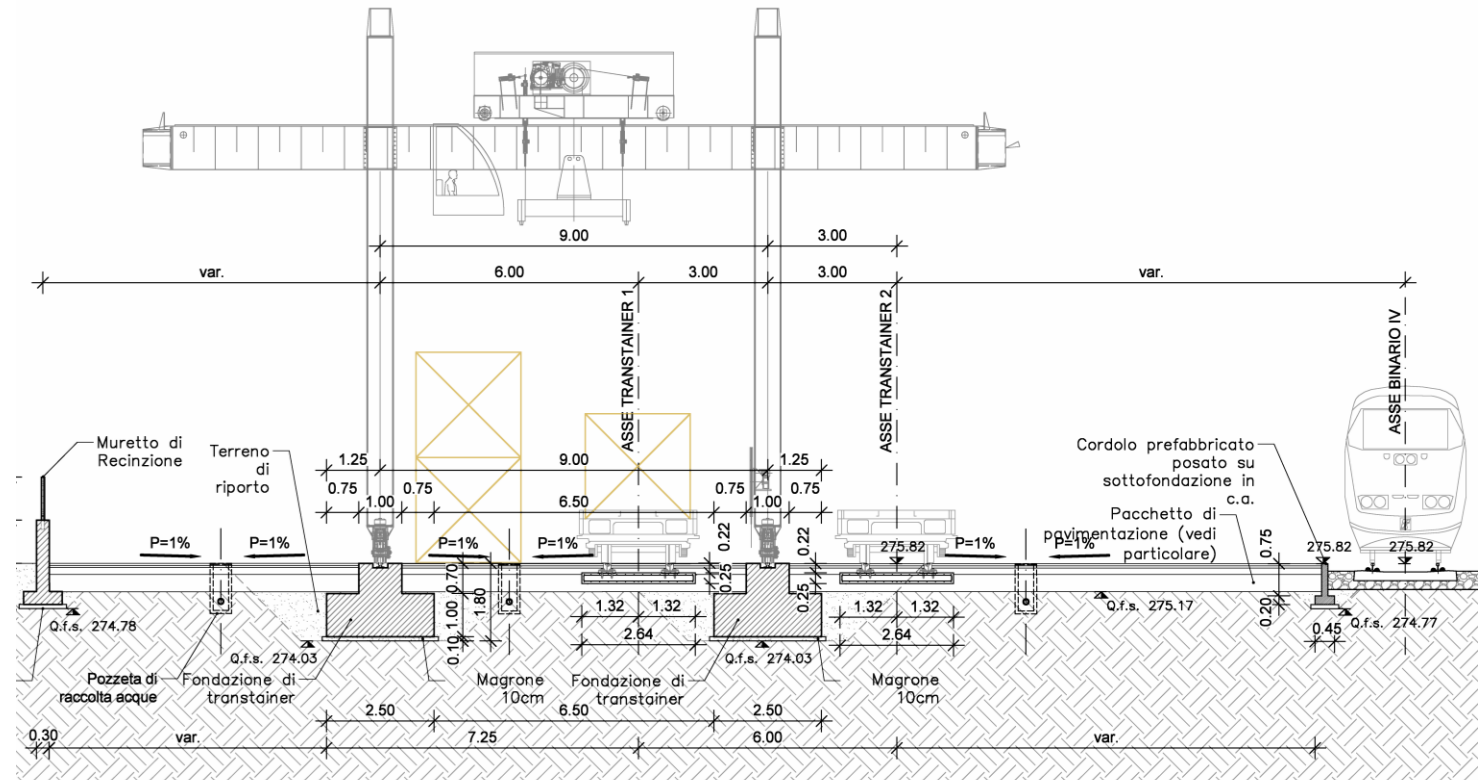
Railways

Main projects

Rail freight terminal in Castelnuovo di Garfagnana (Lucca)

Client: RFI SpA - National railway
infrastructure company

What: Final Design related to the adaptation of the rail plan of the Castelnuovo di Garfagnana station (Lucca) for the construction of the third track serving the freight yard and two loading and unloading tracks served by Transtainer cranes, related structural and civil works, signaling and rail traffic control systems, and lighting of the freight yard. Enhanced safety of the urban road system in the area around the station, with special attention to the freight yard and the nearby industrial





Railways

Main projects

Strengthening of the Kovel-Yahodyn railway line (Ukraine)

Client: European Investment Bank and Ukrainian railways

What: Technical - economic feasibility project for the rehabilitation and enhancement of the railway section which, starting from the border with Poland, reaches the city of Kovel for a total length of approximately 65km. As it is a double track line, one with a European standard gauge and the other with a Russian gauge, NET Engineering also developed the design of systems for changing the gauge.





Railways

Main projects

Upgrading of the railway link for El Ferdan Bridge (Suez Canal)

Client: Chengdu Design and Research Institute of Building Materials Industry Co. Ltd

What: Detailed design of the track bundles, armament, excavations, burying, geotechnical interventions, assistance during the construction phase on the longest swing bridge in the world.

Construction costs: 140.000 euro



From projects to the method

excellence

We read the markets and clients' needs ahead of time by collaborating with them and identifying the best design solutions. **We manage complex projects** harnessing our high-level, specialized skillset, and our ability to always enrich it.

understanding

We consider projects as a whole; we manage them by holding all their pieces together and, at the same time, recognising each piece's specific challenges. **We effectively embrace and overcome their complex nature, and we produce practical, measurable solutions**

-

sharing

We promote **stakeholder engagement** through clear planning, **effective communication and complete information** since the early stages of each project.

sustainability

We treat sustainability as a responsibility not as an ideal, but rather as a practical criterion. Our method starts with a **risk analysis** and develops a **number of possible solutions**, identifying the potential downside to each one of them.





Research and Development

Collaboration with universities

Sustainable Infrastructure Association

Association for European Transport

**Institute for Building Information Modelling
Italy**

Collaboration with start-up

Communities of Practice



Research and Development



Collaboration with universities

NET Engineering is part of the Advisory Board of the master's degree course in Mobility Engineering at the Polytechnic of Milan, has developed partnerships and collaborates with the engineering faculties of various universities throughout the country.



Research and Development



Sustainable Infrastructure Association

NET is a member of the Sustainable Infrastructure Association where it makes an active contribution to the 'Life Cycle Assessment (LCA) for sustainable infrastructure' work group which aims to facilitate LCA assessment for specific construction processes.



Research and Development



Association for European Transport

NET Engineering is the first engineering company in Italy to join the Board of Directors of the main European organization of transport experts. As a member of the Board of Directors, NET benefits from the network of 200 professionals - from over 35 countries - who adhere to the AET, accesses the main results of research conducted at European level in the field of mobility, participates in discussion boards with some of the most important players in this sector in Europe and contributes to defining the themes at the center of the annual European Transport Conference.



Research and Development



Institute for Building Information Modelling Italy IBIMI

NET Engineering is a member of the Institute for Building Information Modelling Italy - IBIMI buildingSMART Italy, where it leads, in collaboration with the University of Padua, the working group that brings together the operators of Italian Airports, with the aim of generating a homogeneous knowledge base on the subject of BIM and playing an active role in the development of international standards, in synergy with the research carried out by buildingSMART International.



Research and Development



Start-ups and innovative companies

NET Engineering collaborates with start-up aimed at planning the future of urban mobility by designing experimental public transport systems, flexible, scalable, shared mobility services and promoting sustainable mobility. NET develops partnerships with innovative companies and academies active in experimenting with new materials and construction technologies



Research and Development



Communities of Practice

At the same time, NET Engineering promotes research and development internally in the sphere of the Communities of Practice, places for the sharing, exchange and enrichment of knowledge and participants' skills on the topics of common interest. NET also sustains the professional growth of all those who take part in the Community.





net-italia.com

