

# NET Engineering

Company presentation



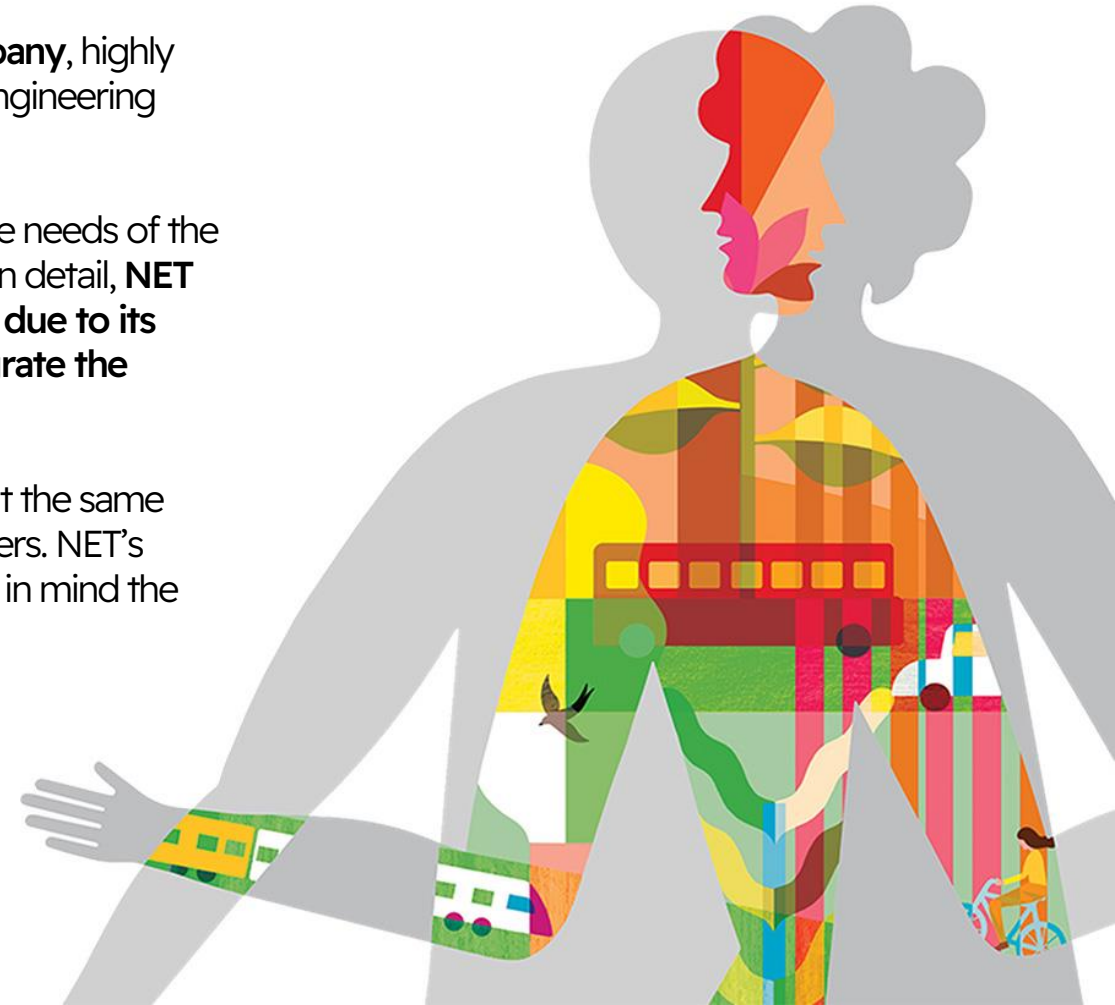
Imagine  
Think  
Design

# Company Profile

NET Engineering is an **independent Italian engineering and architecture company**, highly specialised in the design of transport infrastructure, urban redevelopment and engineering design serving the industrial sector.

As a result of 50 years of experience, NET interprets the context, pre-empting the needs of the market and clients, working with them and indicating the best design solutions. In detail, **NET stands out in the Italian panorama for its ability to manage complex projects due to its high-level specialist skills, the ability to present them in discussions and integrate the contributions.**

NET applies a creative, innovative approach aimed at finding futuristic answers, at the same time ensuring quality of project design and display to the benefit of all stakeholders. NET's mission is System Engineering and responsible planning and design which bears in mind the whole life-cycle of the works.



# our manifest



# Purpose

We leave future generations a better territory than the one we have inherited.



# Identity

We are engineering artists, because we want each project to be a work of art. We are greatly knowledgeable of the different skillsets needed to analyse all of our projects as a whole: from defining the problems to be solved to implementing each project task, without losing sight of our overarching vision that allows us to make each project unique and effective.

We describe our projects with great care, picking a communication style that enhances the unique project features and that effectively addresses each stakeholder. We describe our projects with great care, picking a communication style that enhances the unique project features and that effectively addresses each stakeholder.



# Vision

We want to be among the first independent Italian engineering and architecture companies with the ability to read our ever-changing world in order to create excellent projects together with our client.



# Mission

We design mobility, urban renewal and industry solutions pioneering impeccable engineering practices in the spirit of excellence. We protect what the future generations will inherit by designing smart, shared, sustainable infrastructure.



# Facts and figures

## staff

**141**

FTE  
06.2023

**150**

FTE  
Forecast  
2023

## turnover

**13.3**

M€  
06.2023

**> 20**

M€  
Forecast  
2023

## location

**4**

OFFICES  
Italy

## certification

**6**

UNI EN ISO  
9001  
14001  
45001  
UNI 11337  
UNI ISO 30415  
UNI/PdR 125



**Core competencies:**  
coordination and communication

**Tendering**

**Complex projects**

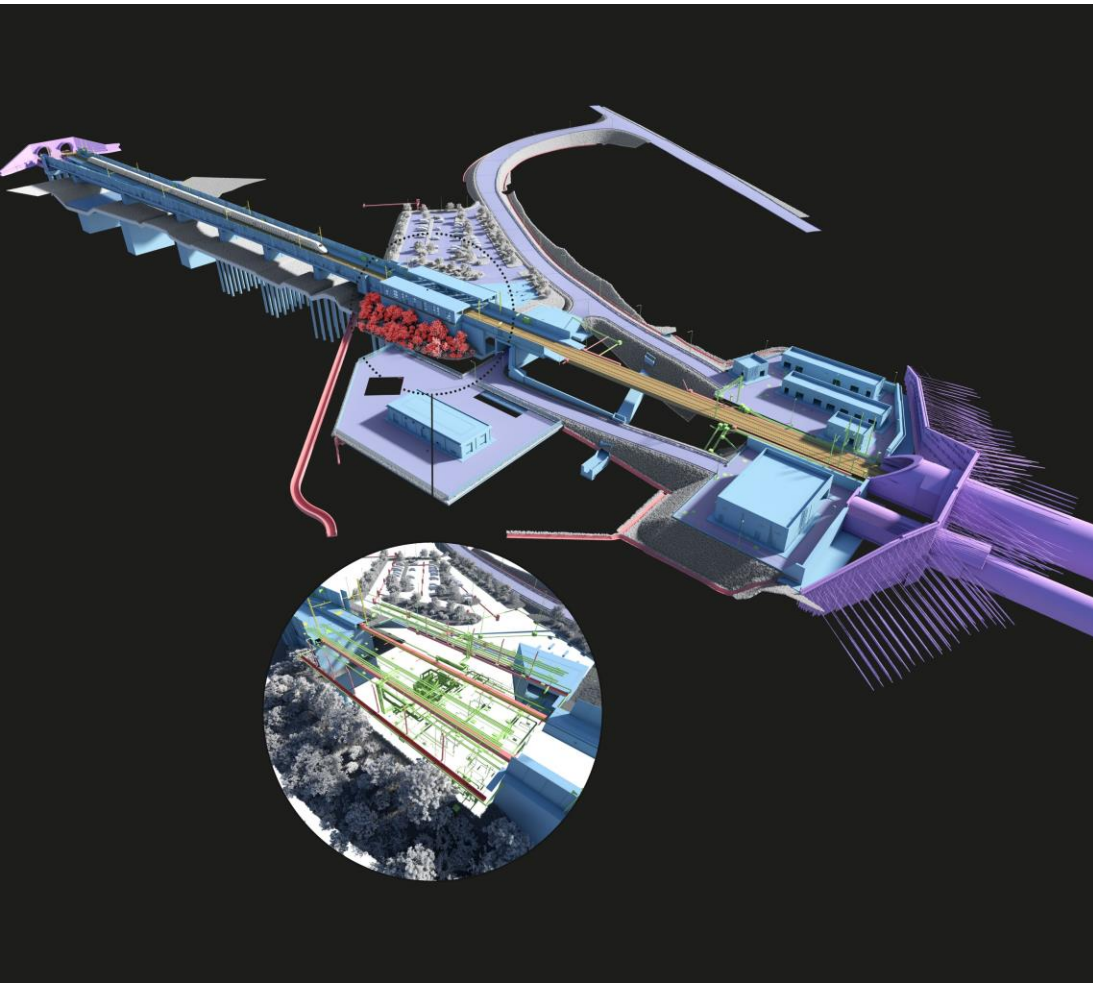
**BIM**

**Visual Design**



# Core competencies:

coordination and communication



## Tendering

360° experience in the world of transport infrastructure

Accurate analysis and interpretation of the basic tender project

Understanding of business needs

Integration among different disciplines

Working under pressure and being able to identify quickly the best possible solutions



# Core competencies:

coordination and communication



## Complex projects

Work organisation: identification of working methods, division of tasks, setting priorities and deadlines

Direct interface with the client, collection and interpretation of requirements

Keeping track of project progress

# Core competencies:

coordination and communication



## BIM

Creation and organisation of the shared working environment

Definition of technical documentation (OGI, PGI, BEP, etc.) necessary for the development of a BIM project

Implementation of the digital model from the tender phase to the work realisation

# Core competencies:

coordination and communication



## Visual design

Accurate interpretation of project material, rapid and high-quality processing of visual design product

Communication skills that are clear and effective towards different stakeholders

# Services

## Dismantling and reconversion

Mobility planning: urban renewal, intermodal hubs and transport terminals  
Technical and environmental due diligence  
Identification and assistance to the survey plans  
Design the dismantling / reconversion of buildings and industrial sites

## Operation and maintenance

Environmental impacts consultancies  
Yards' impact assessment on traffic and railway operation  
Works of art assessment: seismic, static and safety assessment  
Planning of consolidation interventions and structural rehabilitation  
Optimization studies for the railway operation and TPL (Local Public Transport)

## Construction

Construction supervision and safety coordination  
Technical supervision of construction works  
Construction site planning  
Timetable and work progress monitoring  
Specialist advice for construction site  
Project communication

## Programming

Project review  
Program management  
Market analysis on transport demand  
Support for tenders drafting  
Clients assistance for defining the interventions priority

## Planning

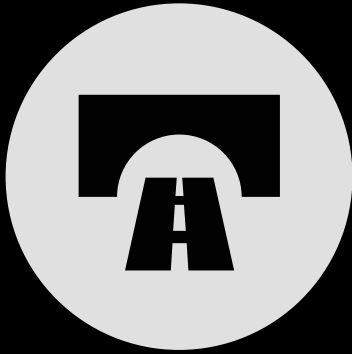
Analysis of alternatives and cost-benefit analysis  
Support for the definition of exercise models  
Coordination and specialised support to companies during tendering  
Urban, regional, wider areas mobility plans  
Planning and scheduling of TPL services  
Support for the selection and characterization of sites for industrial settlements and for energy production  
Risk analysis for industrial sites  
Soil safeguard and protection and natural disaster reduction studies  
Consultancy for the management of natural resources  
BIM Management

## Design

Support during permitting processes  
Technical-specialistic support for stakeholder engagement  
Identification and assistance to the survey plans  
Execution and returning of traditional and 3D surveys  
Technical-economic, final /detailed and construction feasibility design  
Environmental, hydraulic, geological, geotechnical, plant engineering and structural specialistic studies  
Project management



# Business areas



**Transport  
infrastructure**

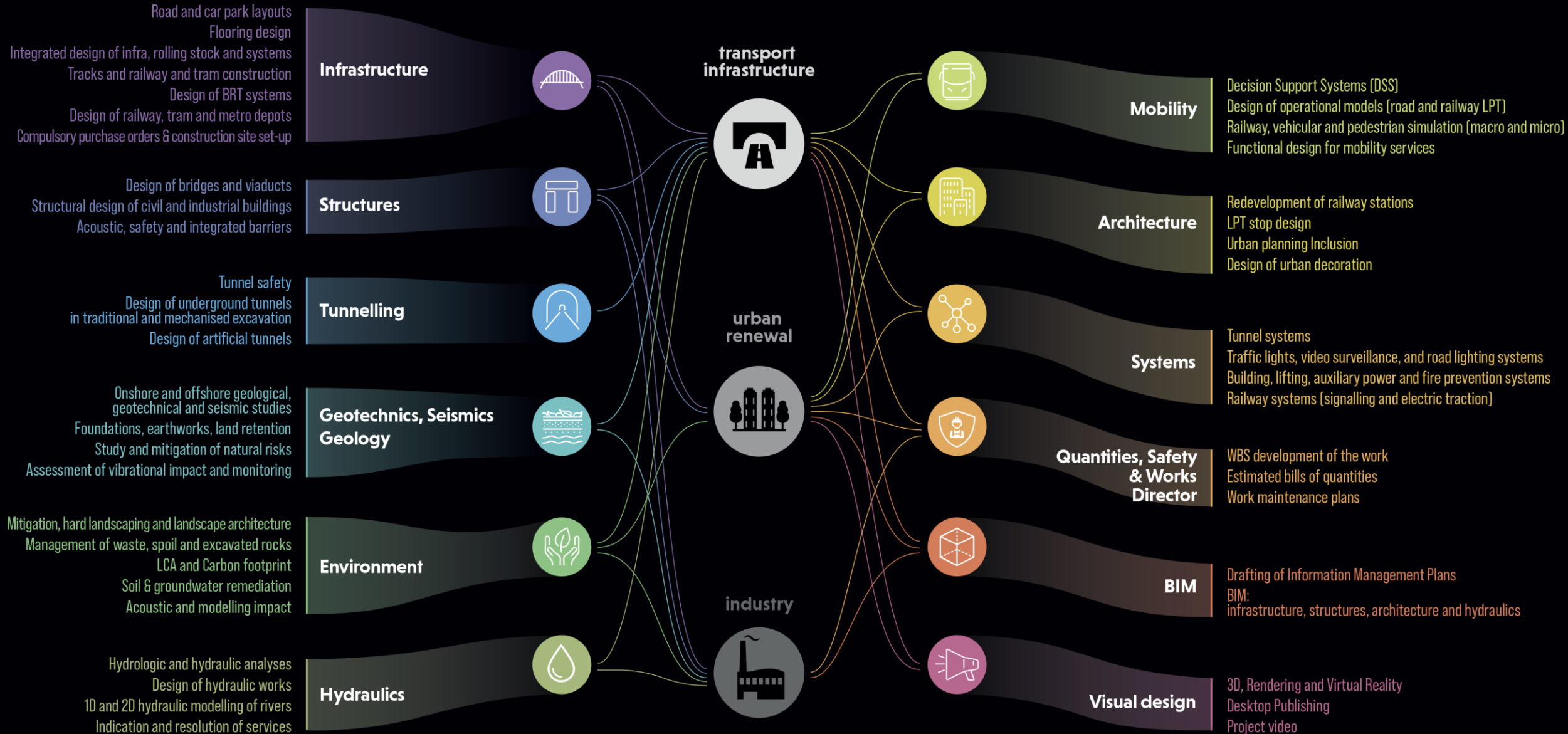


**Urban  
renewal**



**Industry**

# Disciplines and technical competences





# Transport Infrastructures | Mobility



## what

Set up of  
Decision Support  
System (DSS) tools and mobility  
analysis

Planning of Local Public Transport

Bus Rapid Transit and tramways -  
Technical and economic feasibility  
projects

Analysis and market studies for rail  
passenger and freight transport

## main clients

Authorities for Mobility

Deutsche Bahn

Municipalities and Metropolitan  
Authorities

Italian private rail operator

Public authority for Italian railways  
network

Construction Companies

Vietnam Railways Authority

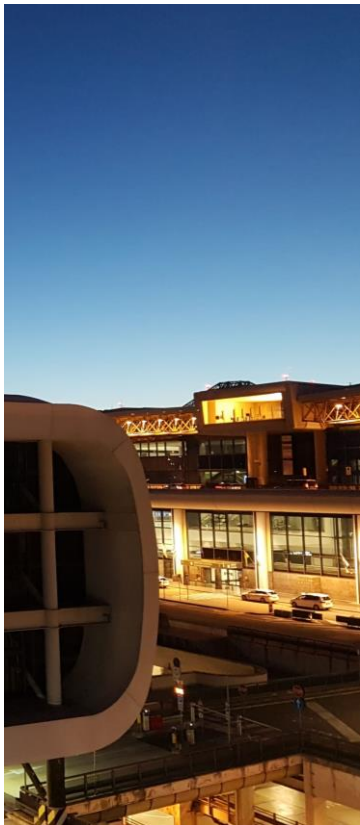
Ghana Road Authority

World Bank





# Mobility | Main projects



## Bus Rapid Transit (BRT) Perugia

**Client:** Municipality of Perugia

**What:** Final and Executive Design of the first electric BRT under Design & Build Procurement in Italy. The BRT will use large-capacity, 100% electric, zero-emission vehicles with a fully lowered floor and a layout with fully equipped and comfortable stops, where infrastructural interventions to protect the seat and traffic control and regulation systems for the traffic light priority of the bus over private traffic are planned. It is an ongoing project.

**Construction costs:** 62.2 M euro





# Mobility

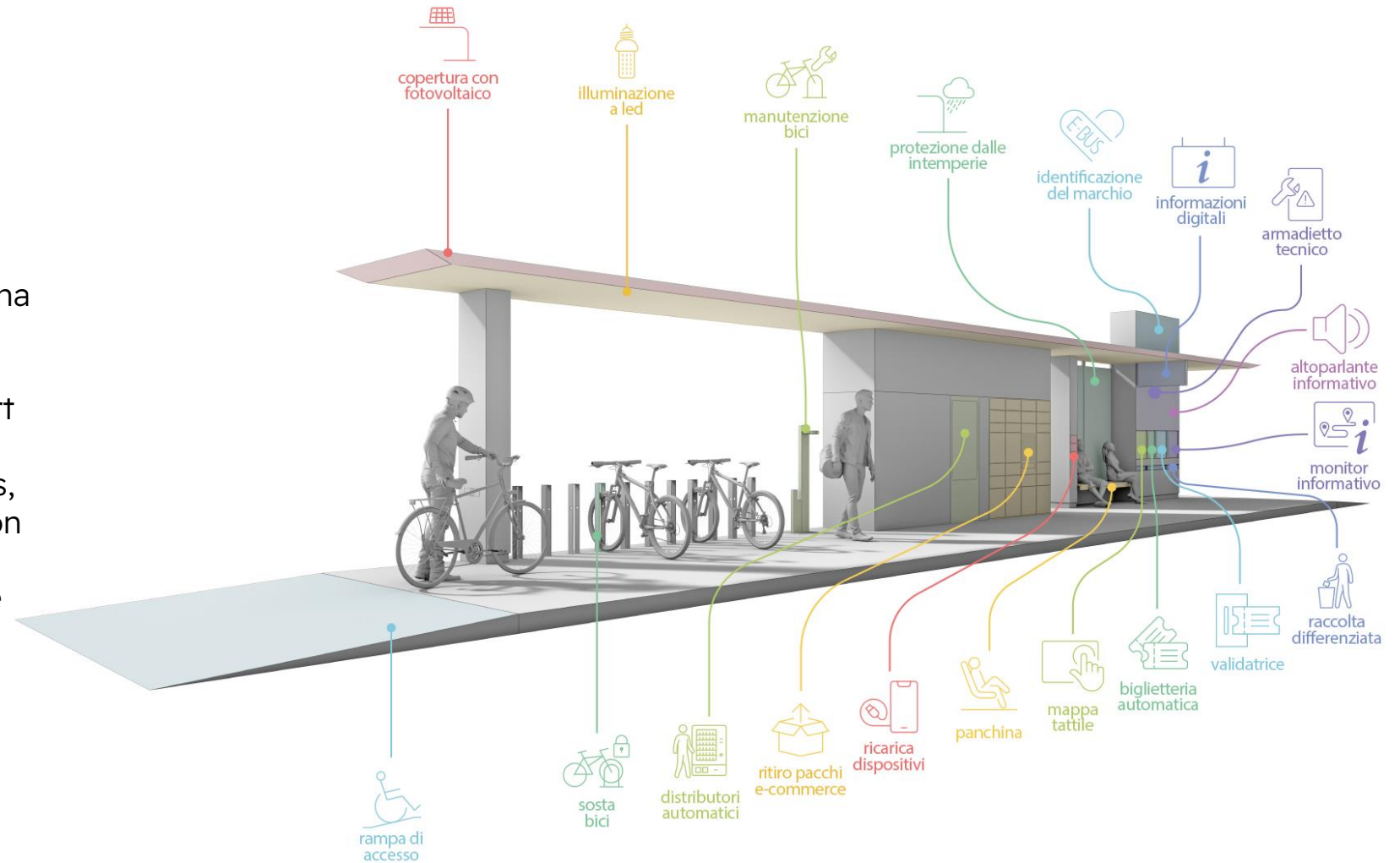
## Main projects

### Bus Rapid Transit (BRT) Bologna

**Client:** Metropolitan Authority of Bologna

**What:** Technical-Economic Feasibility Project: study of the territorial, transport and urban planning framework, identification of transport service needs, analysis of project alternatives, definition of the operating model, public engagement and communication of the project.

**Construction costs:** 64.2 M euro





# Mobility

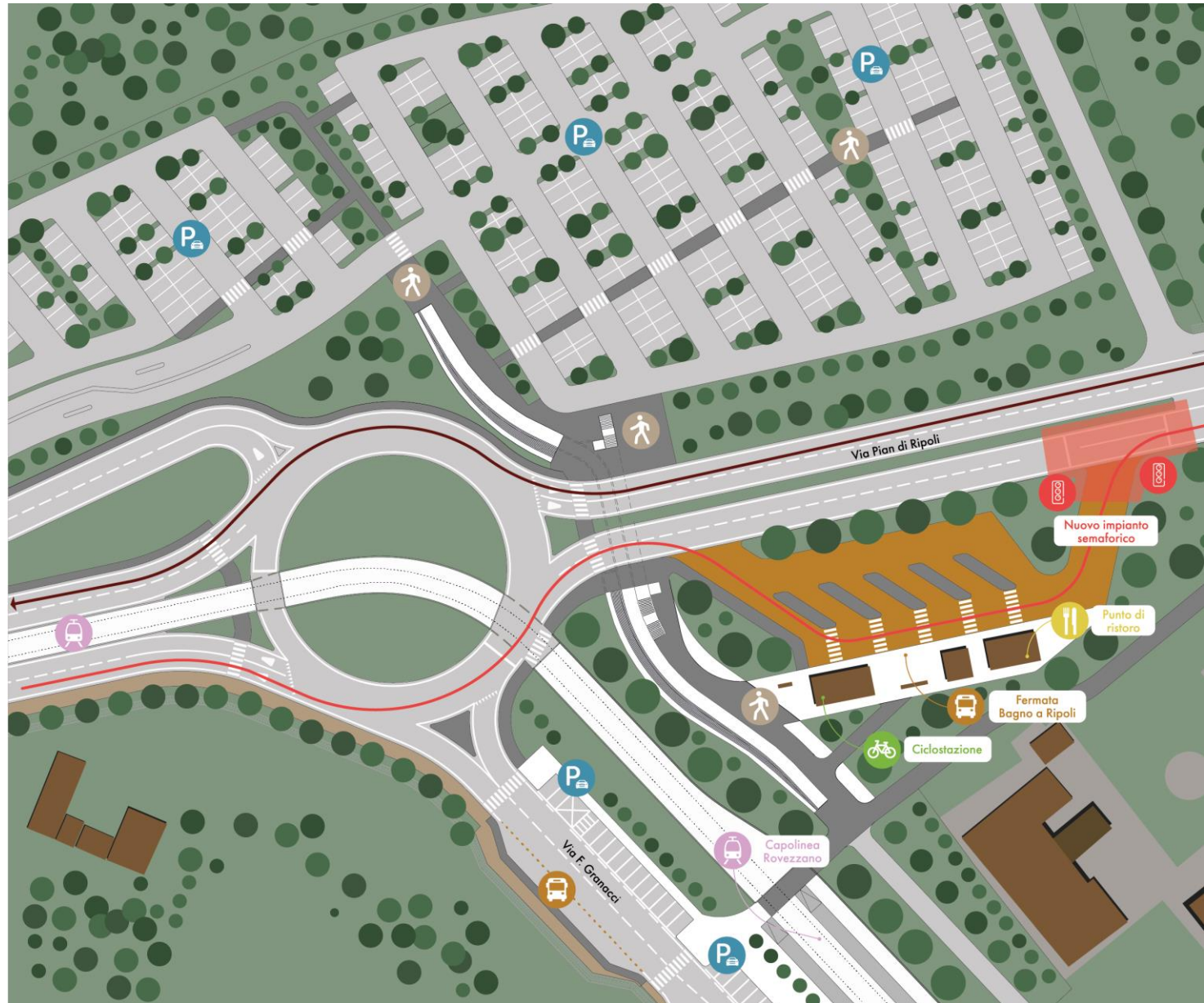
## Main projects

### Bus Rapid Transit (BRT) Florence

**Client:** Metropolitan Authority of Florence

**What:** Technical-Economic Feasibility Project: study of the territorial, transport and urban context, identification of transport service needs, analysis of possible project alternatives, design of the best solution, definition of the operating model, project sustainability analysis, E-bus experimentation and consumption analysis, project communication.

**Construction costs:** 92.6 M euro





# Mobility

## Main projects

### Modena Local Public Transport: new network layout

**Client:** aMo - Modena Local Public Transport  
and Mobility Agency

**What:** project of the new load-bearing  
network, Local Public Transport Basin Plan,  
feasibility study of the transformation of the  
Modena-Sassuolo line and urban renewal  
project within the Modena railway station,  
with reorganization of the intermodal hub  
and preliminary analysis of the real estate  
revaluation



## Redefinition of the urban public transport network of Sondrio

**Client:** Agency for the Local Public Transport of Sondrio and Sondrio Municipality

**What:** Drafting of the Operational Programme of the new urban public transport network of Sondrio, based on regular routes, hourly cadencing, rendez-vous with rail services and new connections with the hamlets





# Mobility

## Main projects

### N-Hydrogen refueling facilities for fuel cell buses

**Client:** TPER SpA

**What:** Reconstruction of the exigency framework, drafting of the DOCFAP and the asseveration report of compliance with the DNSH principle, preparation of the documentation for the Feasibility Nulla Osta to the Fire Department regarding the infrastructural interventions functional to the conversion to hydrogen of a part of the TPER vehicle fleet in the municipalities of Bologna and Ferrara. Drafting of the Technical and Economic Feasibility Project of the infrastructural interventions (general design and civil works).



# From projects to the method

## excellence

**We read the markets and clients' needs ahead of time** by collaborating with them and identifying the best design solutions. **We manage complex projects** harnessing our high-level, specialized skillset, and our ability to always enrich it.

## understanding

**We consider projects as a whole;** we manage them by holding all their pieces together and, at the same time, recognising each piece's specific challenges. **We effectively embrace and overcome their complex nature, and we produce practical, measurable solutions**

- .

## sharing

We promote **stakeholder engagement** through clear planning, **effective communication and complete information** since the early stages of each project.

## sustainability

**We treat sustainability as a responsibility** not as an ideal, but rather as a practical criterion. Our method starts with a **risk analysis** and develops a **number of possible solutions**, identifying the potential downside to each one of them.





# Research and Development

**Collaboration with universities**

**Sustainable Infrastructure Association**

**Association for European Transport**

**Institute for Building Information Modelling  
Italy**

**Collaboration with start-up**

**Communities of Practice**



# Research and Development



## Collaboration with universities

NET Engineering is part of the Advisory Board of the master's degree course in Mobility Engineering at the Polytechnic of Milan, has developed partnerships and collaborates with the engineering faculties of various universities throughout the country.



# Research and Development



## Sustainable Infrastructure Association

NET is a member of the Sustainable Infrastructure Association where it makes an active contribution to the 'Life Cycle Assessment (LCA) for sustainable infrastructure' work group which aims to facilitate LCA assessment for specific construction processes.



# Research and Development



## Association for European Transport

NET Engineering is the first engineering company in Italy to join the Board of Directors of the main European organization of transport experts. As a member of the Board of Directors, NET benefits from the network of 200 professionals - from over 35 countries - who adhere to the AET, accesses the main results of research conducted at European level in the field of mobility, participates in discussion boards with some of the most important players in this sector in Europe and contributes to defining the themes at the center of the annual European Transport Conference.



# Research and Development



## Institute for Building Information Modelling Italy **IBIMI**

NET Engineering is a member of the Institute for Building Information Modelling Italy - IBIMI buildingSMART Italy, where it leads, in collaboration with the University of Padua, the working group that brings together the operators of Italian Airports, with the aim of generating a homogeneous knowledge base on the subject of BIM and playing an active role in the development of international standards, in synergy with the research carried out by buildingSMART International.



# Research and Development



## Start-ups and innovative companies

NET Engineering collaborates with start-up aimed at planning the future of urban mobility by designing experimental public transport systems, flexible, scalable, shared mobility services and promoting sustainable mobility. NET develops partnerships with innovative companies and academies active in experimenting with new materials and construction technologies



# Research and Development



## Communities of Practice

At the same time, NET Engineering promotes research and development internally in the sphere of the Communities of Practice, places for the sharing, exchange and enrichment of knowledge and participants' skills on the topics of common interest. NET also sustains the professional growth of all those who take part in the Community.





net-italia.com

